

# Lectotypification of *Memecylon sisparens* (Memecylaceae)

Moumita Das Das, Arabinda Pramanik and Debabrata Maity<sup>1\*</sup>

Central Botanical Laboratory, Botanical Survey of India, A.J.C. Bose Indian Botanic Garden  
Howrah – 711 103, West Bengal, India

<sup>1</sup>Taxonomy and Biosystematics Laboratory, Department of Botany, University of Calcutta 35  
Ballygunge Circular Road, Kolkata – 700 019, West Bengal, India

\*E-mail: debmaity@yahoo.com

## Abstract

The lectotype of *Memecylon sisparens* Gamble is designated here.

**Keywords:** *Memecylon sisparens*, lectotypification

## Introduction

*Memecylon sisparens* was described by Gamble in 1919 based on three specimens, from Nilgiri Hills. This species closely resembles *M. randerianum* S.M. Almeida & M.R. Almeida (= *M. malabaricum* Cogn., a later homonym of *M. malabaricum* Kostel.) as have been defined in the protologue that both have ovate-oblong, basally cordate, obtusely acute, coriaceous leaves and glomerulate inflorescence (peduncle absent), but the species can be readily distinguished from the later by its petiolate, less cordate, broader leaves and larger flower clusters. The authors while revising Memecylaceae in India, found that in the protologue of *M. sisparens*, Gamble cited three specimens viz., Gamble 14467, Wight KD1071 and *G. Thomson s.n.*, without designating a type. Thus, these specimens are treated as syntypes. All these specimens are deposited in K along with respective digital images. Although all the three specimens are well-preserved and bear flowers but Gamble 14467 is having Gamble's hand-drawings of dissected floral parts on the herbarium sheet along with his hand-written notes on the species. Hence, Gamble 14467 (K) is considered as best choice and in accordance to the Art 9.2, 9.11 & 9.12 of (McNeill *et al.*, 2012), designated here as the lectotype of *M. sisparens* Gamble.

***Memecylon sisparens*** Gamble, Bull. Misc. Inform. Kew 1919: 227. 1919; Fl. Pres. Madras 1:505. 1919 (1: 356. 1957, rep. ed.).

**Lectotype** (designated here): INDIA, Tamil Nadu, Nilgiri District, Sispara Ghat, 1600 m (5000 ft. in herbarium label), June 1884, Gamble 14467 (K-digital image!)

**Syntypes:** INDIA, Tamil Nadu, Nilgiri Hills, 1851, Wight 1071, (K, digital image!), Mount Nilgiri & Kurg Region, *G. Thomson s.n.* (K, digital image!).

**Flowering and fruiting:** June – August.

**Distribution:** Endemic to evergreen shola forests of Southern Western Ghats, particularly Sispara

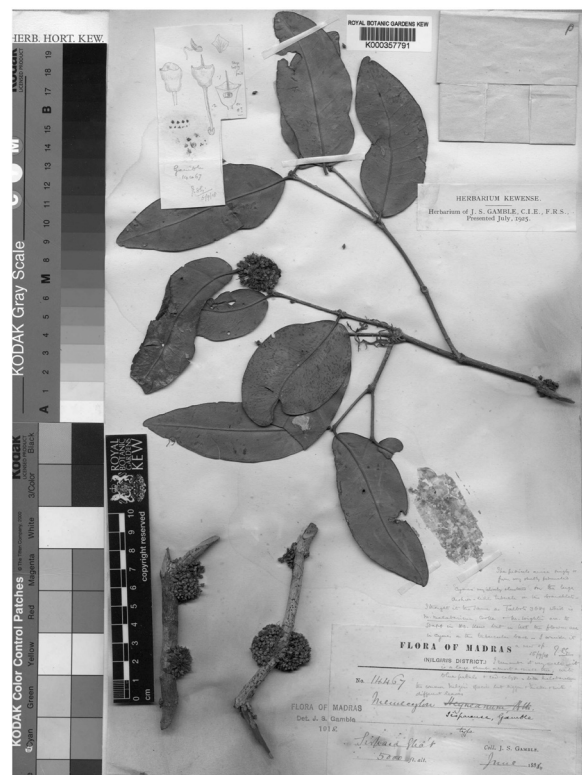


Fig. 1. Lectotype of *Memecylon sisparens* Gamble.

Ghat of Nilgiri Hills, Velliangiri Hills, Coimbatore District, Tamil Nadu (Murugesan *et. al.* 2007) and Wayanad, Palakkad District, Kerala, 1600–1800 m.

## Acknowledgements

The authors are grateful to the Director of Botanical Survey of India for providing necessary facilities and Royal Botanic Gardens, Kew for providing online access to the Type specimens.

## Literature Cited

- Gamble, J.S. 1919.** XII. *Decades Kewenses: Plantarum Novarum in Herbario Horti Regii Conservatarum.* *Bull. Misc. Inform. Kew* **1919**: 227. 1919.
- McNeill, J., Barrie, F.R., Buck, W.R., Demoulin, V., Greuter, W., Hawksworth, D.L., Herendeen, P.S., Knapp, S., Marhold, K., Prado, J., Prud'homme Van Reine, W.F., Smith, G.F., Wiersema, J.H. & N.J. Turland (Eds.) 2012.** *International Code of Nomenclature for algae, fungi, and plants (Melbourne Code).* *Regnum Vegetabile* **154**. A.R.G. Gantner.
- Murugesan, M., Balasubramaniam, V. & S. Paulsamy 2007.** Rediscovery of *Memecylon sisparens* Gamble (Melastomataceae) and *Swertia beddomei* C.B. Clarke (Gentianaceae). *Rheedea* **17** (1&2): 33-34.

---

Received: 07.08.2013

Revised and Accepted: 24.04.2014